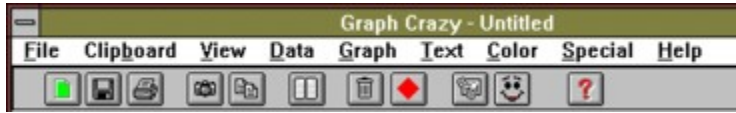


Contents **Graph Crazy 1.1**



Graph Crazy is designed to make quick, attractive graphs. There are 11 basic graph types with a variety of options for each. Graph Crazy will let you do quick data entry or you may import data either through the Windows Clipboard or through the Data Import menu.

Data may also be moved to other applications. You can clip a chart from Graph Crazy to other applications like Microsoft Word or WordPerfect for Windows. If you want to move the graph to a drawing package, like Paintbrush, you may also use the [Clipboard](#).

For graphs that must be independently saved, Graph Crazy lets you save your graph as either a BMP bitmap file or a WMF [metafile](#).

Graph Crazy creates a dynamic link with the Microsoft Graphics Server which runs in the background.

[Menu Commands](#)

[Toolbar](#)

[License](#)

[Order Information](#)

[Invoice](#)

[800 number orders](#)

[ASP MEMBER](#)

Menu Commands

Graph Crazy uses standard menu commands. There's a File and Help menu and access to the Clipboard right in the Clipboard menu. You may choose from the 11 Graph types in the Graph menu...

File

Clipboard

View

Data

Graph

Text

Color

Special

Help

Toolbar



The toolbar offers the following..

New, Save, Print, - Saves the graph as a bitmap of metafile, prints the graph in color.

Bitmap Copy, Data Copy Copies the graph as a bitmap to the windows Clipboard. Copies the data entered (in the Data Entry window) to the Clipboard as DOS text.

Data Form - The page button brings up the data entry form.

Data reset The trash button resets all data formatting, but leaves values and labels.

Color - Bring up the font and color dialog boxes.

Zoom Zooms the graph to full screen view.

Wizard - The face button brings up a Wizard that lets you quickly enter formatting info.

Help Loads on-line help

Right Click If you click the right mouse button in the toolbar, you see a popup of the View menu.

File

The file menu will let you save your graph as a bitmap or metafile. You may also move your text data to Ascii files .

New

To reset EVERYTHING on the graph screen, click on this one. When you have answered Yes to the dialog box that reconfirms the resetting, you will see a randomly generated chart. However, everything else will be erased.

Save / Save As...

Click these to save your chart in either the Metafile or Bitmap formats. You will see a File Save dialog box and in the bottom left of the box you will see the a drop down that lets you select either Metafile(WMF) or Bitmap(BMP) format.

Type in a file name up to eight characters long. Graph Crazy will add the appropriate extension.

Print

Sends the graph to the printer at the highest possible resolution your printer supports. There are two options included as you select Print. You may elect to send a monochrome copy to the printer. The display will change a color graph to black and white, filled with a hatch pattern.

If printing to a one color printer, you might want to try the graph Palette setting (in the Color menu) to Gray Scale. This will effectively send a black and white graph to the printer, but will fill the graph with shades of gray.

If you have a color printer, try the Palette settings in the Color menu to either Solid (the default) or Pastel.

Wizard

The Wizard lets you get a quick start. From the Wizard form, type in the title of the Graph and the bottom note that accompanies it. Select a graph type from the drop down list box. Select a style from the style options. Style changes the fonts on all text that may be typed with the Graph. Straightforward provides a Swiss (Helvetica) font style. Elegant is Times Roman. Typewriter is Modern.

The size of fonts are unchanged. Change them through Text + Font +*item name*.

Exit

You may quit the program from here. Remember to save both the data and any bitmaps or metafile images you wish to keep.

Clipboard

Graph Crazy lets you transfer both text and graphics to other applications using the Windows Clipboard. Via Copy Bitmap or Copy Metafile the user can copy the onscreen graph to any Windows program that supports clipboard graphics. For example, you may clip the graph to WordPerfect for Windows or Microsoft Word. If further editing or the image is desired, you will find Windows Paintbrush an excellent vehicle for adding more text or changing colors.

You can also move text in and out of Graph Crazy. This may be especially important for graphs with many data sets. As well, if you create or modify graph data in Graph Crazy, you may move the data to other Windows programs.

Copy Bitmap/Metafile

Copy/Paste Data

Copy Bitmap

This draws the image as a bitmap file to the Windows Clipboard.

Many Windows programs will accept your graph only when you transfer it via the Bitmap copy.

Copy Metafile

Most programs like WordPerfect for Windows and Microsoft Word can directly accept the Metafile copy.

Also, many programs that do support pixel by pixel editing may transfer the graph back to a bitmap format even if you have used Copy Metafile. Windows Paintbrush will let you edit the graph even if you have copied it as a metafile (however, please note that it is recreated as a bitmap and saved in the BMP format in Paintbrush.)

When in doubt, use Copy Metafile to transfer graphs.

Copy Data

Will transfer the data you have typed via the Windows Clipboard. The data will be in a columnar format with a tab between each data point and a new line for each data set. Labels are at the top of the table.

Paste Data

You may move data from other formats to make an instant chart. If there is text data that may be pasted into Graph Crazy the Paste Data menu item will be enabled. Otherwise, it is grayed out.

However, if the data is not translatable by Graph Crazy, then a chart will not be created. No error message is returned, but you will not recognize the onscreen chart either. Press F5 or check under Data Edit to see what was transferred.

If you want instant success in moving data, follow this pattern: labels on the first line and data only on each subsequent line. Separate each data point with a TAB and press ENTER at the end of a data set.

Here's an example:

Hockey	Baseball	Basketball	Football
120	130	90	22
101	190	13	11
90	210	48	98

Using this format will create an instant chart with labels in the right place. You have only to add titles and legends.

Data

When you initially open Graph Crazy, a random data graph will be represented so that you may begin selecting graph settings before you enter the data. Each time you request a Redraw or change a setting, you will see a new graph. The chart contains no actual data. And when you select Data Edit, you will see no data in the data entry grid.

[Edit/Clear Data](#)

[Import/Export](#)

Edit...

Brings up the data entry form so that real values may be included in the graph.

Data Entry

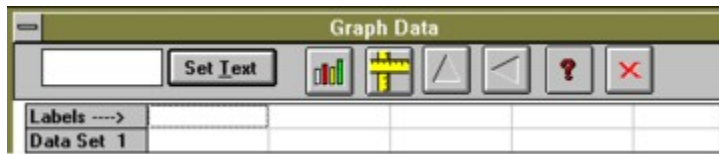
Data Toolbar

Clear

This removes all data from the Data entry screen so that you can type new data. You will be asked if you really want to perform this operation. Click on Yes to continue or No to change your mind. Remember that unless you have saved the data, it will be gone forever when you click on Yes.

You will then see the Data entry screen.

Data Entry



To enter data, you may simply start typing the first label. Press an arrow key to place the data in the Data Entry text box into the grid. The grid highlight moves to the second label point in the first row. Type in the second label.

As you reach the end of the labels, use the arrow keys to move to the second row.

When you have finished data entry, click on the Draw button to close the Graph Data screen and view the graph.

To change data after this point, click on the cell to be edited. Press Backspace to delete or type in the new data..

Graph data from the Data Entry Screen works like this:

Pie Charts: The first row is the legend text and the second row is both label text and graph data.

Other Charts: The first row is the label text and the second and subsequent rows are graph data.

Data Entry Toolbar



The data toolbar contains essential elements for controlling the data entry grid. To get information online, ensure Tooltips (View menu) is enabled.

Draw

Closes the data entry form and redisplay the graph with values from the grid.

Size

To set up the correct number of data points and sets, click on the Size button. A small dialog box appears and the correct dimensions of the graph may be entered. NOTE: Column sizes are for white columns only. The gray column is not counted as a column in this dialog.

Delete Row

Delete Column

These buttons delete either the last column or the last row. The button icon indicates either row or column. If there is any data in the row or column, it will be lost. Blank columns or rows should be deleted before displaying the graph since this will affect the graph itself, inserting zero values for entire data sets or points.

Cancel

Abandons data entry. A warning message appears. If YES is selected, all data entry changes are lost.

Import...

If you have typed in data and saved it in an ASCII (TXT) format, you can load the data directly into Graph Crazy for an instant graph.

The data must be formatted with each data point separated by a tab and each data set separated with a new line. As well, data may have labels on the first line, but only value (i.e., numbers) on each subsequent line. Like:

Hockey	Baseball	Basketball	Football
120	130	90	22
101	190	13	11
90	210	48	98

However, if the data is not translatable by Graph Crazy, then a chart will not be created. No error message is returned, but you will not recognize the onscreen chart either. Press F5 or check under Data Edit to see what was transferred.

Export...

Select this only to create an ASCII file containing the data in your Edit Data form. You will see a Save As dialog box permitting you to type eight letters of a filename. The TXT extension will be added to your data.

If you are moving data into a document created in a Windows word processor you may find the Copy Data feature in the Clipboard menu more convenient. Simply Copy the data, open the word processor and the file and use the application's Edit menu to paste the text.

View

The View menu contains essential screen elements. It hides or displays the toolbar with its graphic buttons, the message display line and redisplay the graph in full screen mode.

Toolbar

Tooltips Tooltips provides information as you move over a tool. The tip appears as a yellow label over the tool. Wait a second for it to appear. You can turn the tips on or off in the View menu.

Messages

Messages are provided in the line at the bottom of the display to tell users about menu options, the operation of graphic buttons in the toolbar. It also provides information about the values used by the graph.

Since the graph will display a representation of a graph -- even if there is not actual data -- the message line is useful to warn the user about the status of the graph. Graph Crazy uses random data so that a graph is always displayed -- data or no data.

When the graph is using actual data, a message is displayed explaining how to quickly edit the data.

Zoom

Zoom displays the chart in full screen view. This is useful if the chart is to become part of a screen slide show, particularly since the change in chart dimension may affect the position of various elements on the screen.

To get out of Zoom mode, click on any part of the screen or press any A to Z key on the keyboard.

Graph

Graph Crazy features 11 graph types. You can choose any of them from the Graph menu. As you make your choice, a dialog box allows you to select from a variety of styles within each graph type.

Pie - both 2D and 3D pie types are selectable from the menu.

Bar - 2D, 3D and Gantt type charts.

Line -Both Line and Log/Line.

Area - A line chart which is filled from the axes.

Plus **Scatter, Polar and High/Low/Close**.

Reset All

Resets the formatting, NOT THE DATA. Any titles, legends, exploded pies, tick specifications and so on will be reset.

However, the data remains. To reset data, click on Data and Clear.

To reset everything, click on File and New.

ReDraw

Click here or press F8 from the graph screen to force a redraw of the graph. This is useful if for any reason the chart is not responding to new data or formatting you have input. Each feature in the menus will redraw the chart, but you may wish to use this one to check the redrawing process.

Text

The Chart menu lets you select a variety of formatting features for your graphs. You can add legends, specify title text and set font characteristics for all of them. You can choose a pattern fill for the graph or select a Black and White chart

Font

Text

Legends/Labels

Font

Font lets you select type, fonts, sizes and styles for either all text or a portion you select.

Click on All to select all text and you will see the Fonts dialog box. Here you can choose from three type faces: Roman, Swiss and Modern.

In the list box on the right of the dialog box, you can choose a variety of styles, bold, underlined or italicized or a mixture.

The Size scroll bar lets you size the type relative to a base font. The main title is by default 200%, other titles 150% and labels and legends 100%. Labels and legends are sized at about 12 points.

If you select the All feature you will set type for all text, even though some of it may not yet be typed.

Labels and Legends will be the same size as the Main title. Bottom and left title will also display at the same size, which may crowd the screen and your printed page.

Text

There are three text strings which you may place on the page: a title at the top of the screen; a bottom title and explanatory text on the left. As you select text, you will see the Text dialog box with three text boxes that may be filled in with the appropriate strings.

Type the text in each text box and press Tab to move to the next. All text you type will be centered (left text is centered but placed on the left of the chart.)

You may type strings as long as you like, but remember that extra long string may make the chart unusually small. Edit your text!

Note Text strings are restricted to less than 80 characters for each entry.

Legends

Legends give a brief description related to each data set or (on a pie chart) point.

As you select Legends..., you see a message box which lets you select or deselect the Legend on the right of the screen.

If you request a legend, you will have to fill in an entry for each data SET in a non-pie chart or each data LABEL in a pie chart.

Labels

The Label dialog box lets you turn labels on or off. If you have a chart type with X or Y information, you may turn one or the other on or off.

If your chart type doesn't support an XY axis, these last two options are grayed out.

Color

You may select from monochrome or color graph and titles. Color graphs allow you to chose from solid, pastel and gray shades palettes. Gray shades may be ideal for representing your graph on a black and white printer!

Pattern fills are available for color graphs.

Colors...

Palette, Pattern Fill, Black 'n White

Colors...

The color picker dialog box allows you to select colors for the chart. Click on any color in the palette and the chart redraws with the new color applied.

At the top of the color picker, you will see a drop down list box. Click on the arrow attached to it and you will be able to select from:

Foreground to change text color

Background to change the background of the chart

Data Sets to alter each individual data set or (in Pies) point

When applying colors to data sets or points, remember that the first data point will be selected first and as you click you will circuit through the data. If you want to leave a color as is, simply select it from the chart.

If you have trouble recognizing the first data set or point, it will be helpful to remember that, by default, the first is blue and the second is green. Colors are applied left to right in bar charts and, in pie styles, from 12 o'clock counter clockwise.

Click on Close when you are finished applying colors.

To reset colors to the default, click on Set Default.

Pattern Fill

When the graph is displayed as color, you can elect to fill each segment with a randomly applied pattern fill.

Palette

This displays the graph in one of three ways.

Solid - The default color style.

Pastel - a lighter (dithered) version of the graph colors.

Gray Scale - a gray scale (dithered) representation of the colors.

Black 'n White

Displays the graph in monochrome. The graph is filled with hatch patterns. This option turns off everything else in the Color menu when selected.

Special

Some graph types have unique features. For example, pie graphs may have the most important slice exploded. Likewise, bar charts can take advantage of Tick increments.

Ticks, Tick Interval

Thick Lines, Dotted Lines

Side Colors, ExplodePie

Ticks

Writes a small increment marks at each data point. By default, a line graph displays no ticks adjacent to the X or Y axis.

Tick Interval...

You may select the distance between tick intervals on the X axis with this one. Fill in a value between 1 and 1000.

If you enter a value larger than the number of Data points, the graph will extend to display the value set for the Tick Interval.

Also, if you select a Tick interval that is not a factor of the last Data Point, your graph may exceed the last Data Point. Thus, setting the tick interval at 40, with a last Data Point of 105, will extend the graph to 120.

Thick Lines

For line graphs, sets the lines up to 7 pixels wide. When turned off, 3 pixel wide lines are drawn. Thick lines are the default, but you may not see them unless you have more than one data set.

Dotted Lines

Dotted Lines represent each data set as a dotted line of varying dash widths. Selecting Dotted Lines turns off thick lines.

Side Colors...

Changes the colors of the sides of 3D bar graphs. The Color Picker dialog box is displayed and you may select colors starting from the left bar.

See [Colors...](#)

Exploded Pie...

Works only with Pie graphs. The Which Slice? dialog box appears. Slice number one is already selected.

If you wish to select a new slice, click on Next until the appropriate slice number appears.

Remember, slice numbers start at 12 o'clock on the pie and proceed in a counter clockwise fashion.

Click on OK to explode the pie.

Help

Contents

You may click on this menu option or press F1 from the graph screen to view this Help file.

Search

Loads the Windows Help engine and allows you to search for features by topic name. This is useful when you know a feature exists, but have no idea how it may be accessed.

Help on Help

This is the Help topic that comes with Microsoft Windows. It explains how to maneuver through Help.

Registration

Information on the software license and ordering information.

About...

Presents the copyright screen and provides information on registration.

LICENSE - Graph Crazy 1.1

Graph Crazy refers to all programs distributed on the Graph Crazy diskette.
Graph Crazy is Copyright (C) 1993, 1994 WordSmith Document Design Inc., St. John's NF Canada

Users of Graph Crazy v.1.1 must accept this disclaimer of warranty: "Graph Crazy v.1.1 is supplied as is. The author disclaims all warranties, expressed or implied, including, without limitation, the warranties of merchantability and of fitness for any purpose. The author assumes no liability for damages, direct or consequential, which may result from the use of Graph Crazy v. 1.1."

Graph Crazy v.1.1 is a shareware program and is provided at no charge to the user for evaluation. Feel free to share it with your friends, but please do not give it away altered or as part of another system. The essence of "user-supported" software is to provide personal computer users with quality software without high prices, and yet to provide incentive for programmers to continue to develop new products. If you find this program useful and find that you are using Graph Crazy v.1.1 and continue to use Graph Crazy v.1.1 after a reasonable trial period, you must make a registration payment of \$19.95US/\$24 Canadian to WordSmith Document Design Inc.. The registration fee will license one copy for use on any one computer at any one time.

Commercial, educational and institutional users of Graph Crazy v.1.1 must register and pay for their copies of Graph Crazy v.1.1 within 30 days of first use or their license is withdrawn.

Site-License arrangements may be made by contacting WordSmith Document Design Inc..

Anyone distributing Graph Crazy v.1.1 for any kind of remuneration must first contact WordSmith Document Design Inc. at the address below for authorization. This authorization will be automatically granted to distributors recognized by the ASPs adhering to its guidelines for shareware distributors, and such distributors may begin offering Graph Crazy v.1.1 immediately (However WordSmith Document Design Inc. must still be advised so that the distributor can be kept up-to-date with the latest version of Graph Crazy v.1.1.).

You are encouraged to pass a copy of Graph Crazy along to your friends for evaluation. Please encourage them to register their copy if they find that they can use it. All registered users will receive a copy of the latest version of the Graph Crazy system.

Registration and ordering

Invoice Our Address Quantity Discounts License
800 number orders
ASP MEMBER

Graph Crazy is distributed under the shareware concept. You are encouraged to try the program and register after 30 days. Registration costs \$19.95 US/ \$24 Canadian. Orders outside US/Canada must include a shipping and handling charge to cover extra expenses. Please include \$3 US to cover shipping and handling.

When you register - WordSmith Document Design Inc. agrees to ship a copy of the latest version of Graph Crazy - along with an attractive instruction booklet. As well, you will receive a fully registered copy of Graph Crazy with Show and Tell so that you can run your graphs or other BMP files in a slide show.

Checks and money orders are accepted for payment, as well as purchase orders for amounts of \$39.90 and over. Please specify whether you want 5.25" or 3.5" diskettes. Note that, for volume orders, you may fax a Purchase Order directly to WordSmith and we will invoice.

Our Address

To contact WordSmith about dealer price, volume discounts, site licenses, shipment status, or for technical help, call or fax 709-576-7078.

Or write:

WordSmith Document Design Inc.,
PO Box 8061 Stn A
St. John's NF Canada A1B 3M9



Quantity discount

Volume discounts and site licenses are available.

Discounts are as follows:

1-10 copies	no discount
10 - 30 copies	20%
over 30	30%

In the over 30 category, we provide a site license, which includes instruction sheets, but only two master diskettes.

Ordering via 800 numbers

You can order directly from Wordsmith Document Design Inc.

However, if you wish to use your credit card (Mastercard, VISA, American Express, or Discover Card) you may place an order through the Public (software) Library at

1-800-242-4PSL
(1-800-242-4775)

You may also place a credit card fax order at 713-524-6398 Overseas credit card orders: 713-524-6394
Compuserve 71355,470

WHEN YOU PLACE THE ORDER, PLEASE HAVE YOUR CREDIT CARD HANDY as well as your name and address. Ask to register Graph Crazy, Part# 11865 .

THESE NUMBERS ARE FOR ORDERING ONLY. WordSmith Document Design Inc cannot be reached at these numbers. To contact WordSmith about dealer price, volume discounts, site licences, shipment status, or for technical help, call or fax 709-576-7078.

Please note that for volume orders, you may fax a Purchase Order directly to WordSmith and we will invoice.

Our address

Invoice

Send to:
WordSmith Document Design Inc.
PO Box 8061 Stn A
St. John's NF Canada A1B 3M9

FAX: 709-576-7078 for POs

Qty	Item	US	Price
—	Graph Crazy (includes registration, program and printed instruction sheet)	\$19.95 each	\$ _____
check one () 3.5" floppy () 5.25" floppy			
Canadian residents add 7% . NF residents please add 12% PST			GST \$ _____ PST \$ _____
Total			\$ _____
Payment by: () Check or money order		() PO # _____	

Name _____
Company _____
Address _____

Phone (_____) _____ Fax(_____) _____

Where did you obtain Graph Crazy?

Comments _____

Bitmap

A bitmap file may be edited pixel by pixel. However, it is often not easy to resize a bitmap without losing resolution. Bitmap files have a BMP extension.

Metafile

The Graph Crazy default. Use this format for the best resolution. You won't be able to perform a pixel edit, but you may successfully resize an image. Metafiles have a WMF extension.

Ascii

Text without word processing or other formatting. Readable by almost any editor or word processor.

Clipboard

A Windows program which holds text and graphics for transfer within an application or to other Windows applications.

Shareware

A try before you buy marketing concept. You can try out the software and register after a brief trial period.

This program is produced by a member of the Association of Shareware Professionals (ASP). ASP wants to make sure that the shareware principle works for you. If you are unable to resolve a shareware-related problem with an ASP member by contacting the member directly, ASP may be able to help. The ASP Ombudsman can help you resolve a dispute or problem with an ASP member, but does not provide technical support for members' products. Please write to the ASP Ombudsman at 545 Grover Road, Muskegon, MI 49442 or send a CompuServe message via CompuServe Mail to ASP Ombudsman 70007,3536."

